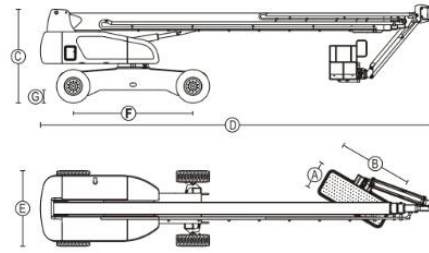
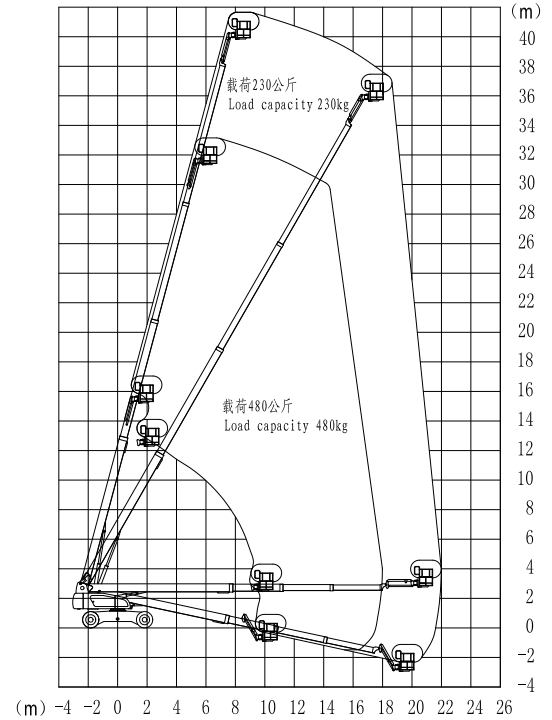


GTBZ42Z-42m Diesel telescopic boom lift

Model	GTBZ42Z
Working Height Maximum	44m
Platform Height Maximum	42m
Working radius maximum	23m
Lift capacity(restricted)	480kg
Lift capacity(non-restricted)	230kg
Length(stowed) ①	13.m
Width(axle retracted)	2.49m
Width(axle extended) ②	4.1m
Height(stowed) ③	3.28m
Wheel base ④	4.2m
Ground clearance ⑤	280mm
Platform measurement ⑥*⑦	2.44*0.91m*1.13m
Turning radius(inside,axle,retracted)	4.14m
Turning radius(inside,axle,extended)	3.13m
Turning radius(outside, axle,retracted)	7.02m
Turning radius(outside, axle,extended)	6.5m
Travel speed(stowed)	4.4km/h
Travel speed(raised or extended)	1.1km/h
Grade ability-Stowed	40%
Solid tire	445/65-22.5
Swing speed	0~0.8rpm
Turn table swing	360 Continuous
Platform leveling	Automatic leveling
Platform rotation	±80°
Hydraulic tank volume	151L
Total weight	23600kg
Control voltage	12v
Drive &Steering mode	4*4*4
Engine	Cummins
Rated power	Cummins QSF2.8T-C72 (53kw/2200rpm)



GTBZ42Z



CONFIGURATION	
Engine	Cummins (USA)
Lifting pump	Hi-tech(China)/Cassapa(Italy)
Driving pump	Poclain(France)/Hi-tech(China)/SAUER(USA)
Travel motor	SAUER(USA)/Hengli(China)/Hi-tech(China)
Travel reducer	Brevini(Italy)/Infinity(China)/Omni(USA)
Hydraulic valve	Hydraforce (USA)
Swing motor	Whlionshare(China)/Zhongyi(China)