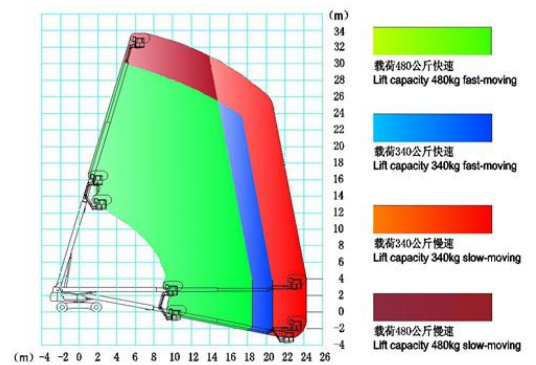
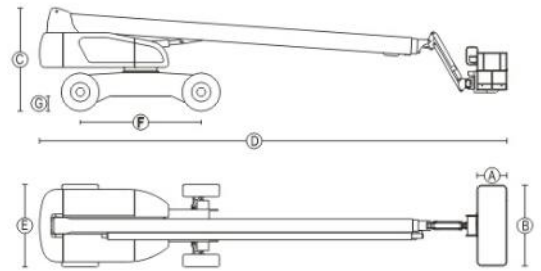


GTBZ32Z-32m Diesel telescopic boom lift

Model	GTBZ32Z
Working Height Maximum	34m
Platform Height Maximum	32m
Working radius maximum	21.4m
Lift capacity(restricted)	480kg
Lift capacity(non-restricted)	230kg
Length(stowed) ④	14.13m
Width (axle retracted)	2.5m
Width (axle extended) ⑤	3.43m
Height(stowed) ③	3.08m
Wheel base ⑥	3.66m
Ground clearance ②	280mm
Platform measurement ⑧*⑦	2.44*0.91m
Turning radius(inside,axle,retracted)	4.14m
Turning radius(inside,axle,extended)	2.74m
Turning radius(outside, axle,retracted)	6.56m
Turning radius(outside, axle,extended)	5.85m
Travel speed(stowed)	4.4km/h
Travel speed(raised or extended)	1.1km/h
Grade ability-Stowed	40% (4WD) 30% (2WD)
Solid tire	385/65-22.5
Swing speed	0~1/3rpm
Turn table swing	360 Continuous
Platform leveling	Automatic leveling
Platform rotation	±90°
Hydraulic tank volume	150L
Total weight	18650kg (2WD)
Control voltage	12v
Drive &Steering mode	4*4*4
Engine	Cummins QSF2.8T-C71
Rated power	56kw/2200rpm



Engine	Cummins from Japan
Variable pump	SAUER from USA
Gear pump	SALAMI from Italy
Travel	Rexroth from German
Travel reducer	Rexroth from German
Hydraulic valve	Hydraforce from USA,Northman from China
Swing motor	HELAC from USA