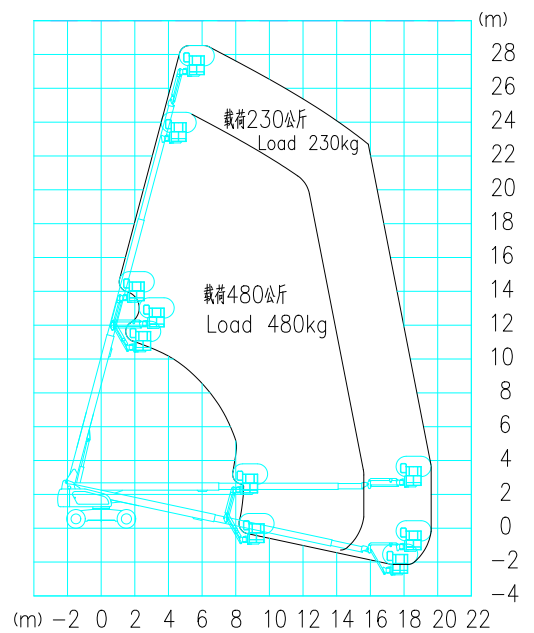
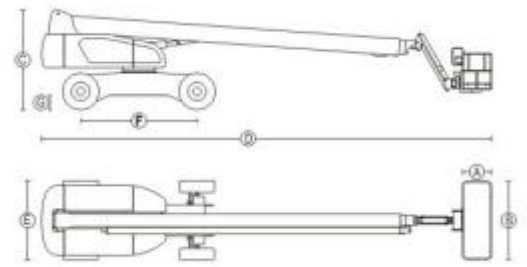


GTBZ28Z-28m Diesel telescopic boom lift

Model	GTBZ28Z
Working Height Maximum	30m
Platform Height Maximum	28m
Working radius maximum	20m
Lift capacity(restricted)	480kg
Lift capacity(non-restricted)	230kg
Length(stowed) ④	13.5m
Width (stowed) ⑤	2.58m
Height(stowed) ③	2.83m
Wheel base ⑥	3.0m
Ground clearance ⑦	430mm
Platform measurement ⑧*⑨	2.44*0.91m
Turning radius-inside	3.59m
Turning radius-outside	5.95m
Travel speed(stowed)	4.4km/h
Travel speed(raised or extended)	1.1km/h
Grade ability-Stowed	40% (4WD)
Solid tire	385/65-22.5
Swing speed	0~1/3
Turn table swing	360 Continuous
Platform leveling	Automatic leveling
Platform rotation	±90°
Hydraulic tank volume	151L
Total weight	17000kg (4WD)
Control voltage	12v
Drive &Steering mode	4*4*2;
Engine	Cummins QSF2.8T-C71
Rated power	53kw/2400rpm



CONFIGURATION	
Engine	Cummins(USA)
Driving pump	SAUER (USA)/Hi-tech(China)
Lifting pump	Hi-tech(China)/CASSAPA(Italy)
Driving motor	SAUER(USA)/Hi-tech(China)
Driving reducer	PMP(Italy)/Infinite(China)
Hydraulic valve	Hydraforce(USA)
Swing motor	Whlionshare(China)

