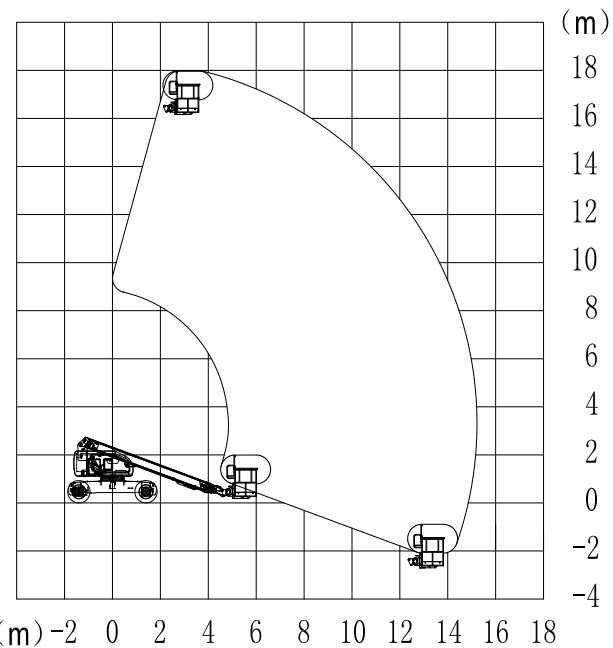
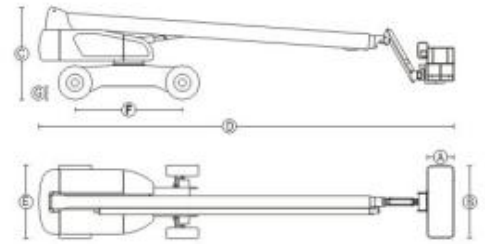


GTBZ16 Diesel telescopic boom lift

Working Height Maximum	18.2m
Platform Height Maximum	16.2m
Horizontal outreach maximum	15m
Lift capacity(restricted)	340kg
Lift capacity(non-restricted)	230kg
Length(stowed) ④	7.895m
Width (stowed) ⑤	2.39m
Height(stowed) ③	2.58m
Wheel base ⑥	2.4m
Ground clearance ⑦	430mm
Platform measurement ⑧*⑨	1.83*0.76m
Tailswing	3m
Turning radius Minimum	5.6m
Travel speed(stowed)	6.3km/h
Travel speed(raised or extended)	1.1km/h
Gradeability	16.7°(30%)
Solid tire	33*12-20
Swing speed	0~0.8rpm
Turntable swing	360° Continuous
Platform leveling	Automatic leveling
Platform rotation	±90°
Hydraulic tank volume	151L
Total weight	10000kg
Control voltage	12v
Drive Steering mode	4*2*2/4*4*2
Engine	Cummins B2.8-C58/Yanmar 4T NV94L-B*PHZ
Rated power	35.5kw/2200rpm



CONFIGURATION

Engine	Yanmar from Japan
Variable pump	SAUER from USA
Gear pump	SALAMI from Italy
Travel motor	Rexroth from German
Travel	Rexroth from German
Hydraulic valve	Hydraforce from USA, Northman from China
Swing motor	HELAC from USA