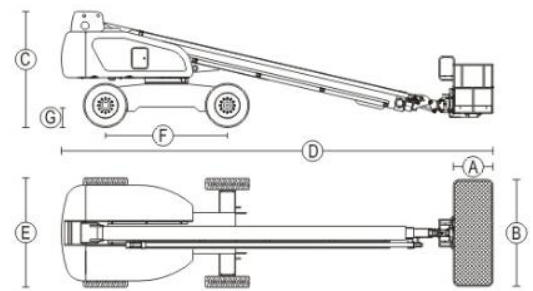
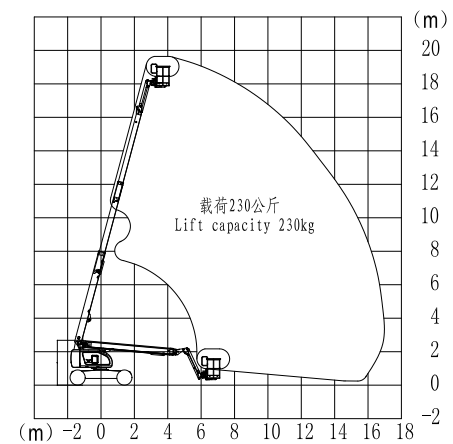


GTBZ18-18m Diesel telescopic boom lift

Model	GTBZ18
Working Height Maximum	20.3m
Platform Height Maximum	18.3m
Working radius maximum	15.8m
Lift capacity(restricted)	480kg
Lift capacity(non-restricted)	230kg
Length(stowed) ①	8.45m
Width (stowed) ②	2.49m
Height(stowed) ③	2.75m
Wheel base ④	3m
Ground clearance ⑤	430mm
Platform measurement ⑥*⑦	1.83*0.76m
Turning radius-inside	3.0m
Turning radius-outside	5.2m
Travel speed(stowed)	4.4km/h
Travel speed(raised or extended)	1.1km/h
Grade ability 4WD	40% (4WD) 30% (2WD)
Solid tire	33x14-20
Swing speed	0~1/3rpm
Turn table swing	360 Continuous
Platform leveling	Automatic leveling
Platform rotation	±90
Hydraulic tank volume	151L
Total weight	12000kg (2WD)
Control voltage	12v
Drive &Steering mode	4*4*2;4*2*2
Engine	Yama/Deutz/Cummins
Rated power	Yanmar 4TNV94L-B*PHZ 35.5kw/2200rpm


Range of Motion

CONFIGURATION

Engine	Yama from Japan;Deutz from Germany;Cummins from Japan
Variable pump	SAUER from USA
Gear pump	SALAMI from Italy
Travel motor	Rexroth from German
Travel reducer	Rexroth from German
Hydraulic valve	Hydraforce from USA,Northman from China
Swing motor	HELAC from USA

