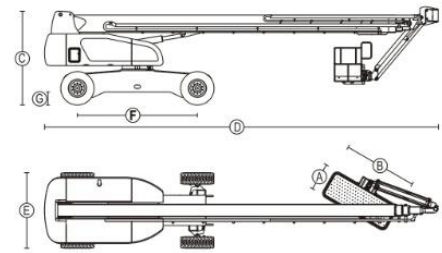
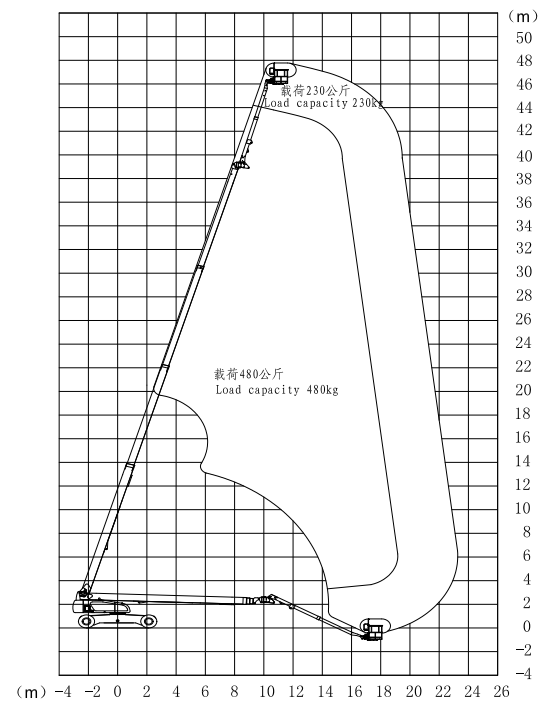


GTBZ46Z-46m Diesel telescopic boom lift

Model	GTBZ46Z
Working Height Maximum	48
Platform Height Maximum	46
Working radius maximum	23.4
Lift capacity(restricted)	480kg
Lift capacity(non-restricted)	230kg
Length( stowed) ④	13.266
Width (axle retracted)	2.5
Width (axle extended) ⑤	4.1
Height(stowed) ③	3.28
Wheel base ⑥	4.2
Ground clearance ⑦	280mm
Platform measurement ⑧*⑨	2.44×0.91×1.13m
Turning radius(inside,axle,retracted)	4.14
Turning radius(inside,axle,extended)	3.13m
Turning radius(outside, axle,retracted)	7.02
Turning radius(outside, axle,extended)	6.5
Travel speed(stowed)	4.4km/h
Travel speed(raised or extended)	1.1km/h
Grade ability-Stowed	21.8° (40%)
Solid tire	445/50D710
Swing speed	0~0.8
Turn table swing	360 Continuous
Platform leveling	Automatic leveling
Platform rotation	±90°
Hydraulic tank volume	151L
Total weight	24600kg
Control voltage	12v
Drive &Steering mode	4*4*4
Engine	Cummins
Rated power	Cummins QSF2.8T-C71 (53kw/2200rpm)



GTBZ46Z



CONFIGURATION	
Engine	Cummins (USA)
Lifting pump	Hi-tech(China)/Cassapa(Italy)
Driving pump	Poclain(France)/Hi-tech(China)/SAUER(USA)
Travel motor	SAUER(USA)/Hengli(China)/Hi-tech(China)
Travel reducer	Brevini(Italy)/Infinity(China)/Omni(USA)
Hydraulic valve	Hydraforce ( USA)
Swing motor	Whlionshare(China)/Zhongyi(China)