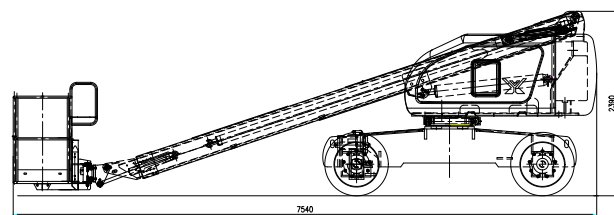
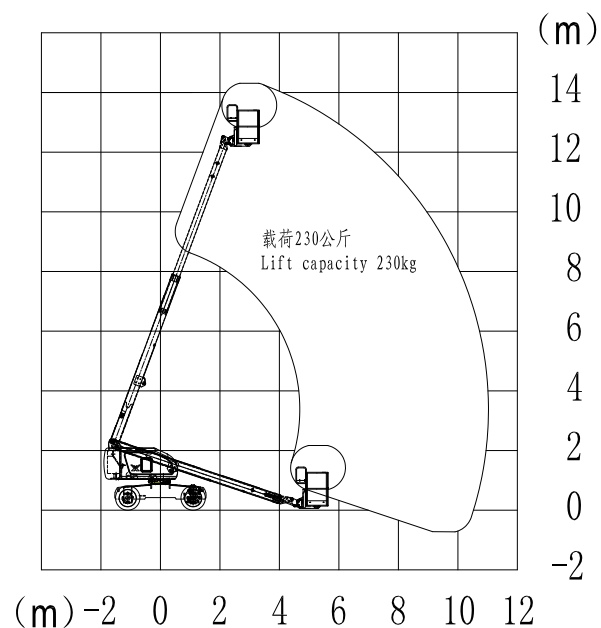


GTBZ12 Diesel telescopic boom lift

MODEL	GTBZ12
Working Height Maximum	14.3m
Platform Height Maximum	12.3m
Horizontal outreach maximum	10.5m
Lift capacity(restricted)	340kg
Length(stowed) ①	7.54m
Width (stowed) ②	2.29m
Height(stowed) ③	2.58m
Wheel base ④	2.4m
Ground clearance ⑤	430mm
Platform measurement ⑥*⑦	1.83*0.76m
Turning radius inside	2.6m
Turning radius outside	5.6m
Travel speed(stowed)	5km/h
Travel speed(raised or extended)	1.1km/h
Gradeability	16.7°(30%)
Solid tire	33*12-20
Swing speed	0~0.8rpm
Turntable swing	360° Continuous
Platform leveling	Automatic leveling
Platform rotation	±80°
Hydraulic tank volume	100L
Total weight	7000kg
Control voltage	12v
Drive Steering mode	4*2*2
Engine	Yanmar 4TNV94L-B*PHZ
Rated power	35.5kw/2200rpm



Range of Motion



CONFIGURATION	
Engine	Yanmar (JAPAN)
Oil pump	Changyuan (China)
Travel motor	Dali(China)
Travel reducer	Dali(China)
Hydraulic valve	Hydraforce(USA)